




INSERT SHEET

MOUNTED HEAVY DUTY COIL TINE HARROW

FOR 5800 AND QUAD 4 CHISEL PLOWS

 **WIL-RICH**

PO Box 1030

Wahpeton, ND 58074

PH (701) 642-2621

Fax (701) 642-3372



PERSONAL SAFETY IS IMPORTANT!

ALL PERSONNEL INVOLVED WITH THE ASSEMBLY AND/OR OPERATION OF THIS EQUIPMENT MUST BE INFORMED OF PROPER SAFETY PROCEDURES. OPERATOR'S AND ASSEMBLY MANUALS PROVIDE THE NECESSARY INFORMATION. IF THE MANUAL IS LOST FOR A PARTICULAR IMPLEMENT, ORDER A REPLACEMENT AT ONCE. OPERATOR'S AND ASSEMBLY MANUALS ARE AVAILABLE AT NO CHARGE UPON REQUEST.

ADDRESS INQUIRIES TO:

WIL-RICH

PO BOX 1030

WAHPETON, ND 58074

PH (701)642-2621 FAX (701)642-3372

Remove all wires and arrange the parts conveniently.

NOTE: Always wear safety glasses or goggles and be careful when cutting wires and steel bands as they are under tension and will spring back when cut.

Wherever the terms "left" and "right" are used, it must be understood to mean from a position behind and facing the machine.

Lubricate all bearings and moving parts as you proceed and make sure they work freely.

Loosely install all bolts connecting mating parts before final tightening.

When tightening bolts, they must be torqued to the proper number of foot-pounds as indicated in the table unless specified. It is important that all bolts be kept tight.

On new machines, all nuts and bolts must be re-checked after a few hours of operation.

	GRADE 2			GRADE 5			GRADE 8		
TORQUE IN FOOT POUNDS									
BOLT DIA	3/8	1/2	5/8	3/4	7/8	1			
HEX HEAD	9/16	3/4	15/16	1-1/8	1-5/16	1-1/2			
UNC GR2	18	45	89	160	252	320			
UNC GR5	30	68	140	240	360	544			
UNC GR8	40	100	196	340	528	792			
UNF GR2	21	51	102	178	272	368			
UNF GR5	32	70	168	264	392	572			
UNF GR8	48	112	216	368	792	840			

CAUTION

TO AVOID INJURY AND/OR MACHINE DAMAGE:

- Refer to Operator's Manual for safety instructions.
- Do not stand or climb on machine when operating.
- Use clean hazard flashers and SMV sign when transporting.
- Observe highway traffic regulations.

23325

ASSEMBLY INFORMATION

When replacing a bolt, use only a bolt of the same grade or higher. Except in shear bolt applications, where you must use the same grade bolt.

Bolts with no markings are grade 2

Grade 5 bolts furnished with the machine are identified by three radial lines on the head.

Grade 8 bolts furnished with the machine are identified by six radial lines on the head.

All U-bolts are grade 5.

THIS SYMBOL USED TO CALL YOUR ATTENTION TO INSTRUCTIONS CONCERNING YOUR PERSONAL SAFETY. BE SURE TO OBSERVE AND FOLLOW THESE INSTRUCTIONS

CAUTION

Failure to follow these instructions may result in personal injury and/or equipment damage.

- Just before and during operation be sure no one is on or around the implement.
- Before activating the hydraulic system, check hoses for proper connections.
- Before lowering the wings for the first time, make sure the entire system has been charged with oil.
- With wings down always install hydraulic cylinder channel lock(s) for transporting.

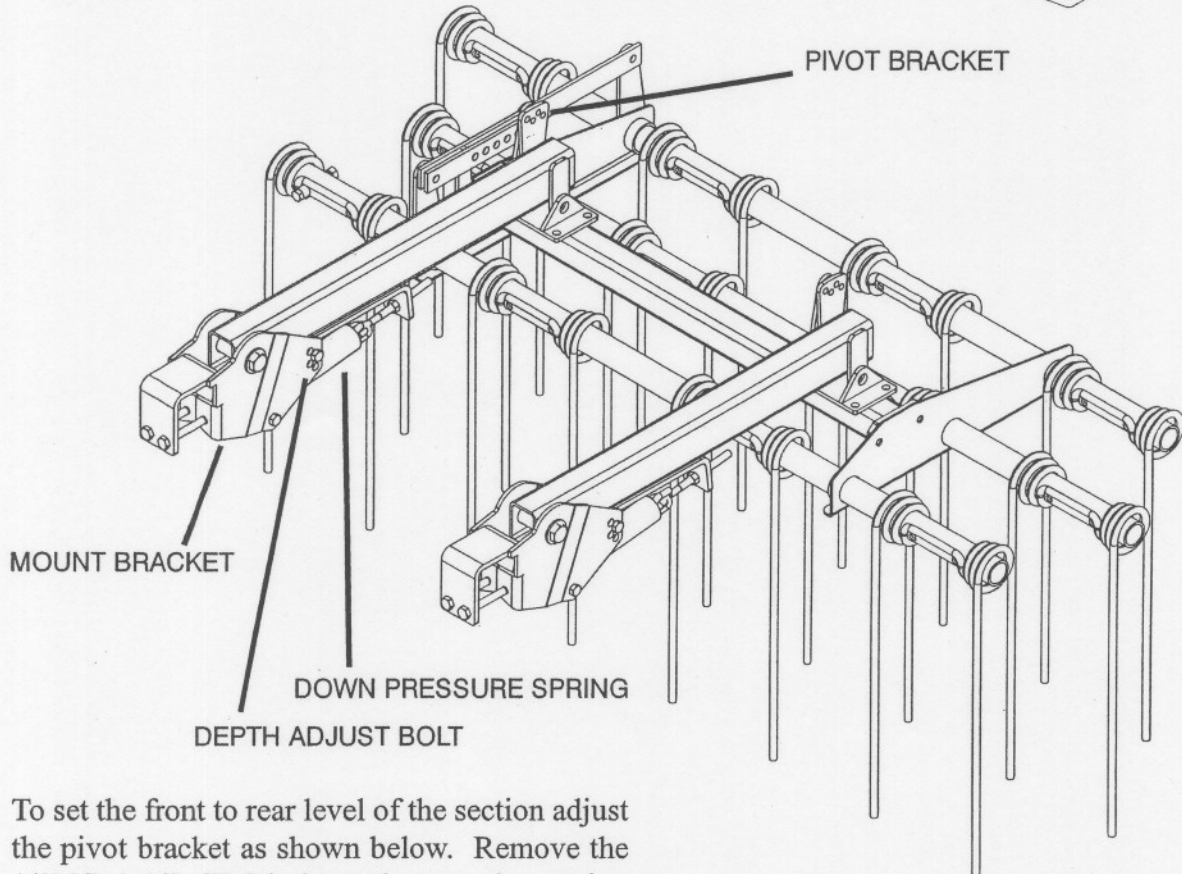
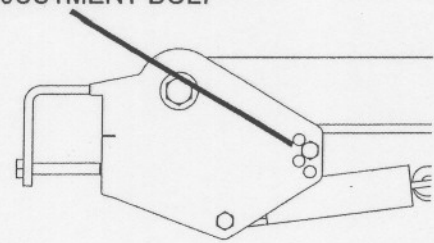
54374

HARROW OPERATION

SECTION LEVEL ADJUSTMENT

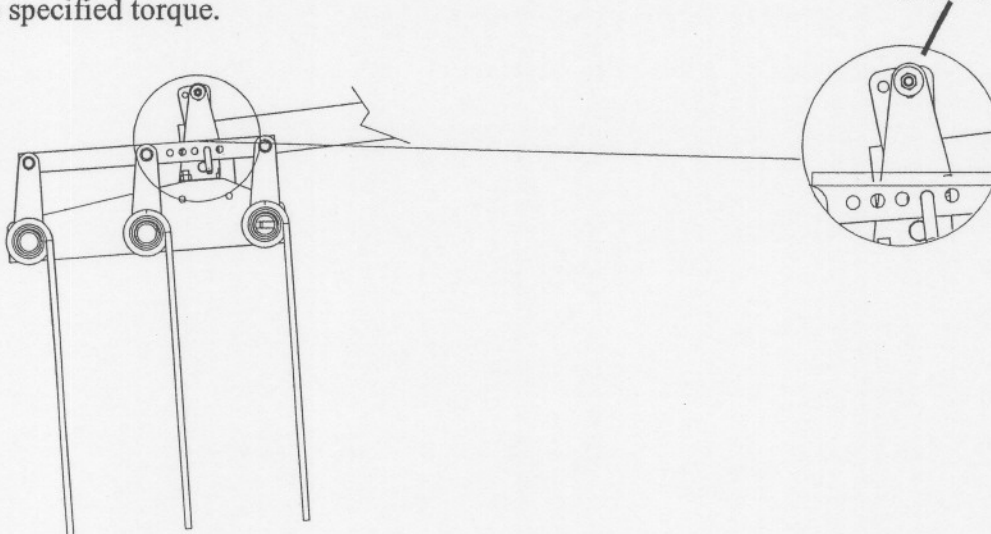
To set the harrow working depth, first set the chisel plow to its working position. Remove the 5/8NCx5 GR5 bolt and relocate as required. The section should be set to run 3" to 5" deep in the working position.

DEPTH ADJUSTMENT BOLT

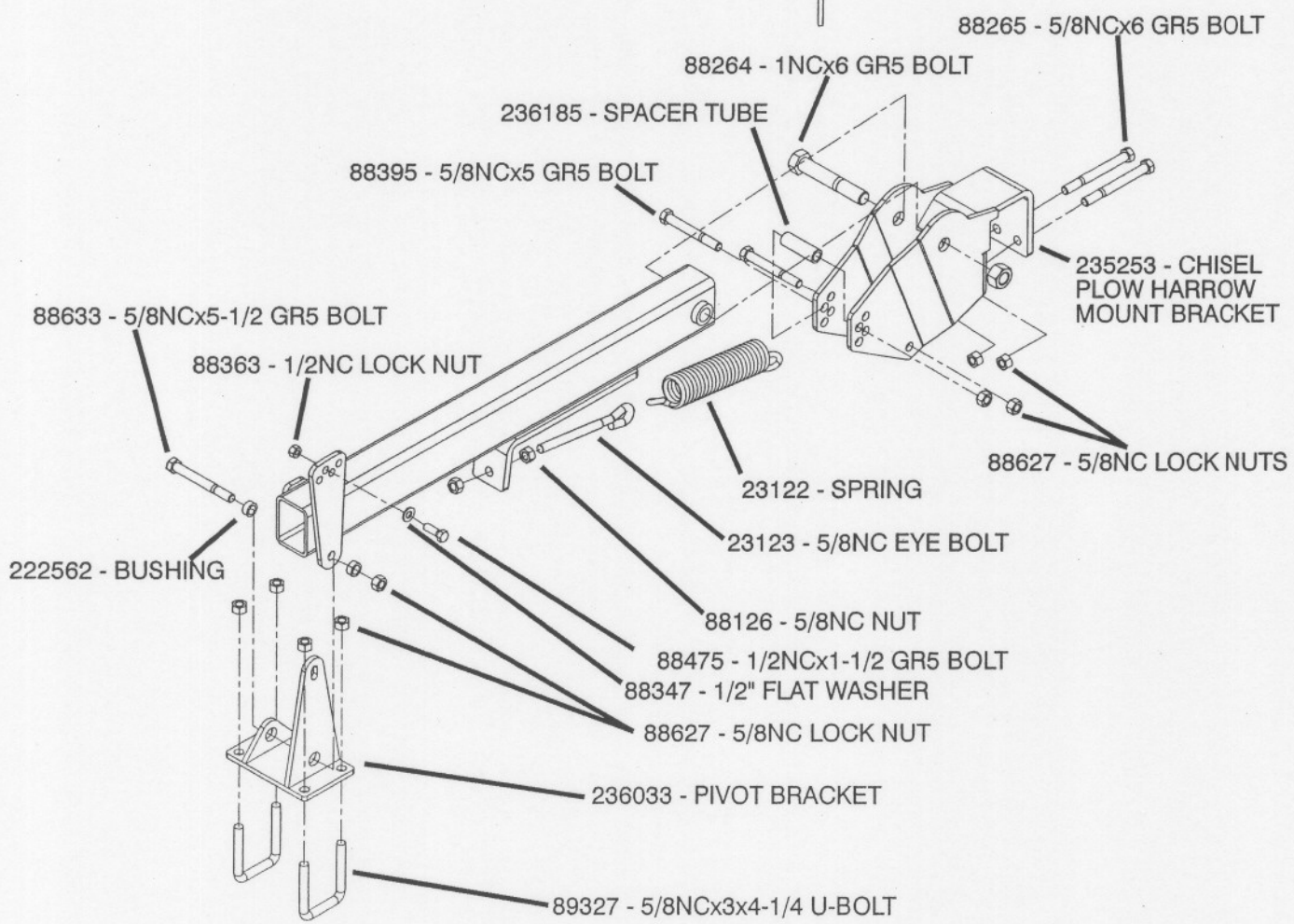
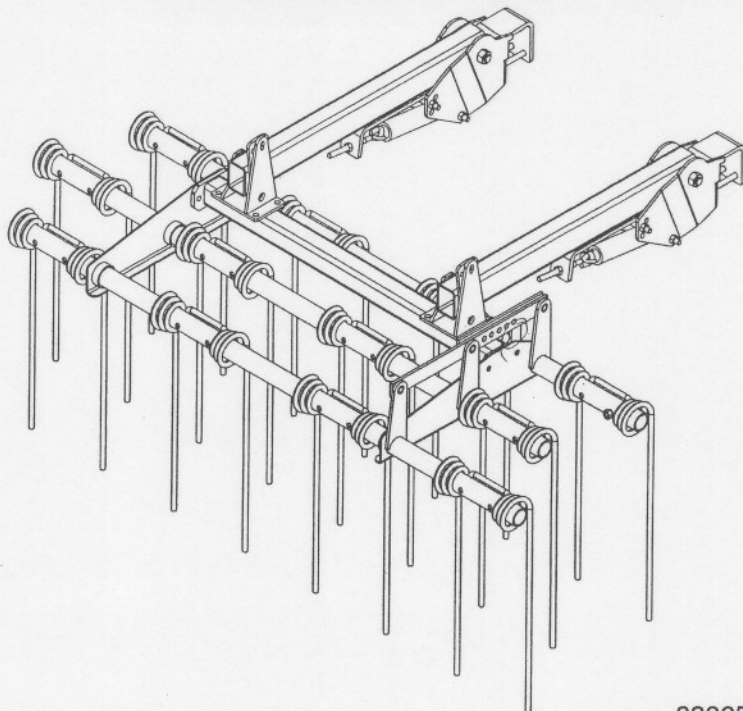


To set the front to rear level of the section adjust the pivot bracket as shown below. Remove the 1/2NCx1-1/2 GR5 bolts and rotate the section until the section is level. Reinstall bolts and tighten to specified torque.

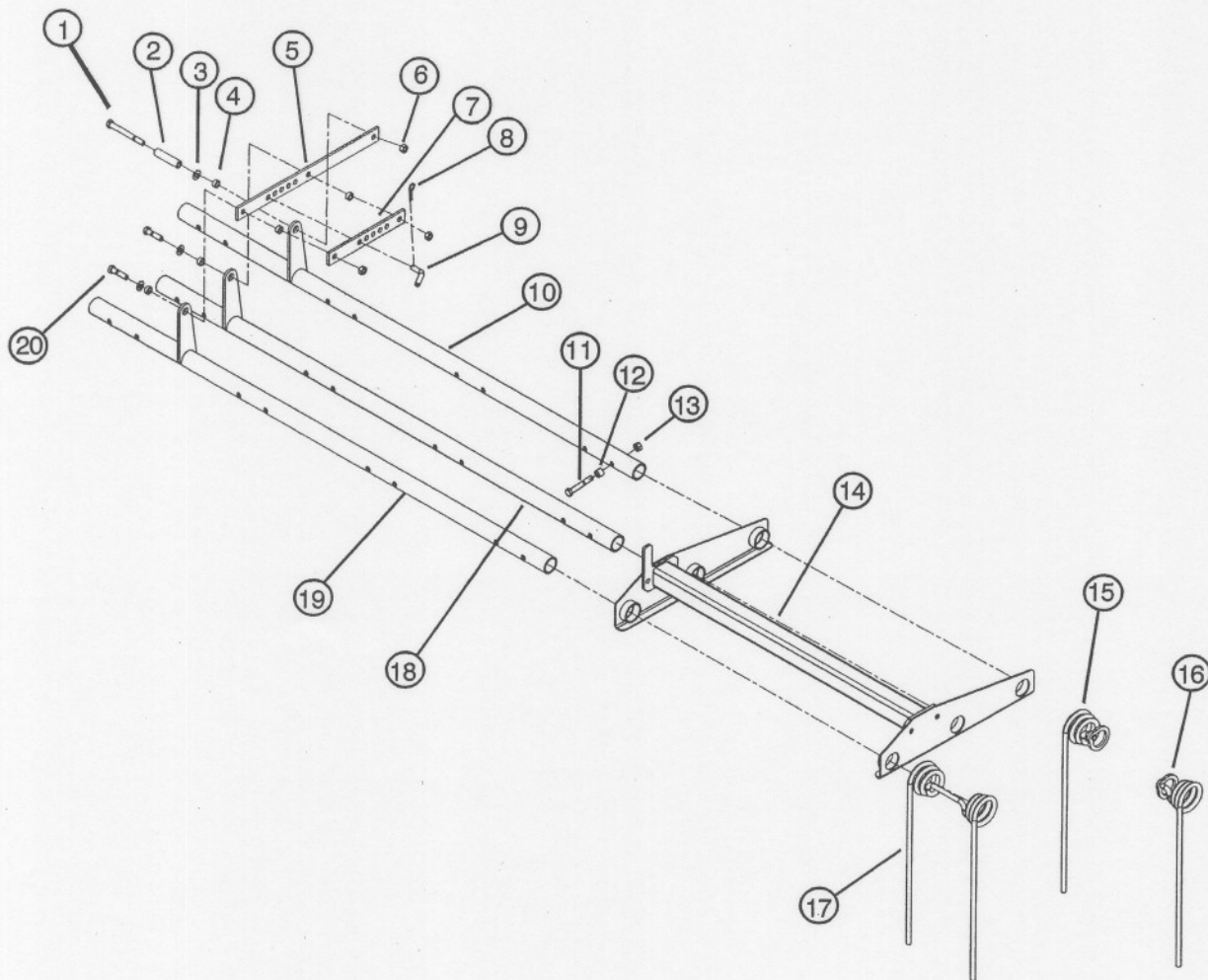
1/2NCx1-1/2 GR5 BOLT



HARROW ARM/PIVOT BRACKET ASSEMBLY



HARROW SECTION ASSEMBLY

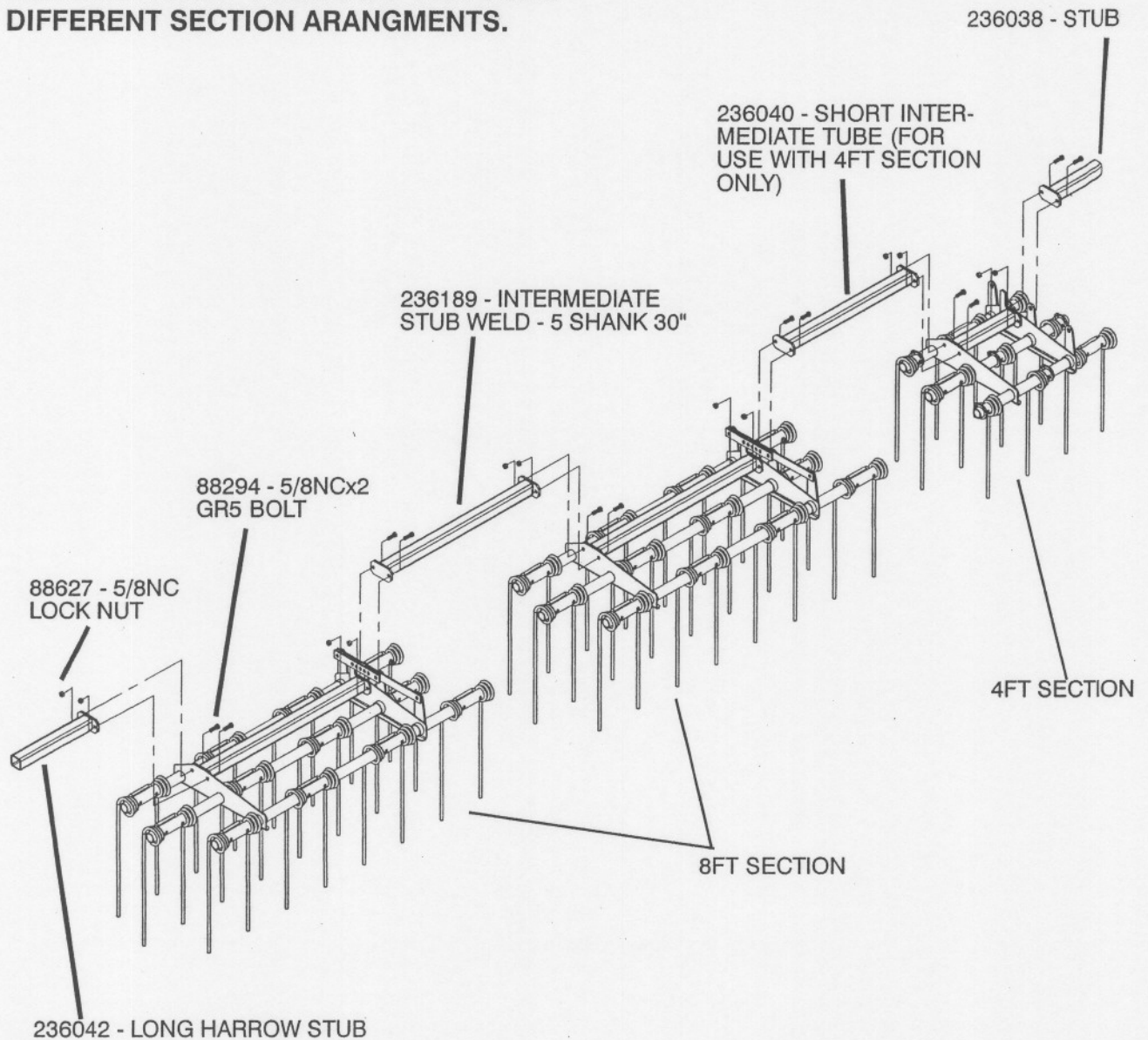


ITEM	PART NO.	DESCRIPTION
1	88295	5/8NCx6 GR5 BOLT
2	22521	SPACER TUBE
3	88277	5/8 FLAT WASHER
4	222562	BUSHING
5	222570	ADJUST BAR
6	88627	5/8NC LOCK NUT
7	222575	INNER ADJUST BAR
8	23039	HAIR PIN
9	32871	5/8x1-3/8 BENT PIN
10	222574	8FT REAR HARROW TUBE
	222569	6FT REAR HARROW TUBE
	236027	4FT REAR HARROW TUBE
11	88298	5/8NCx4 GR5 BOLT
		QTY - 24-8FT
		18-6FT
		12-4FT
12	200479	BUSHING
13	88845	5/8NC LOCK NUT
14	236195	8FT HARROW MOUNT WELD
	236198	6FT HARROW MOUNT WELD
	236028	4FT HARROW MOUNT WELD

ITEM	PART NO.	DESCRIPTION
15	236021	QTY 3/ 4FT SEC. R SINGLE HARROW TOOTH
16	236020	QTY 3/ 4FT SEC. L SINGLE HARROW TOOTH
17	236087	SHORT H.D. HARROW TOOTH
		QTY - 12/ 8FT SEC
		9/ 6FT SEC
		3/ 4FT SEC
18	222573	8FT CENTER HARROW TUBE
	222568	6FT CENTER HARROW TUBE
	236026	4FT CENTER HARROW TUBE
19	222572	8FT FRONT HARROW TUBE
	222567	6FT FRONT HARROW TUBE
	236024	4FT FRONT HARROW TUBE
20	88409	5/8NCx2-1/2 GR5 BOLT

INTERMEDIATE TUBE ASSEMBLY

NOTE: THIS IS FOR GENERAL ASSEMBLY INSTRUCTIONS. HARROWS CAN HAVE DIFFERENT SECTION ARANGMENTS.

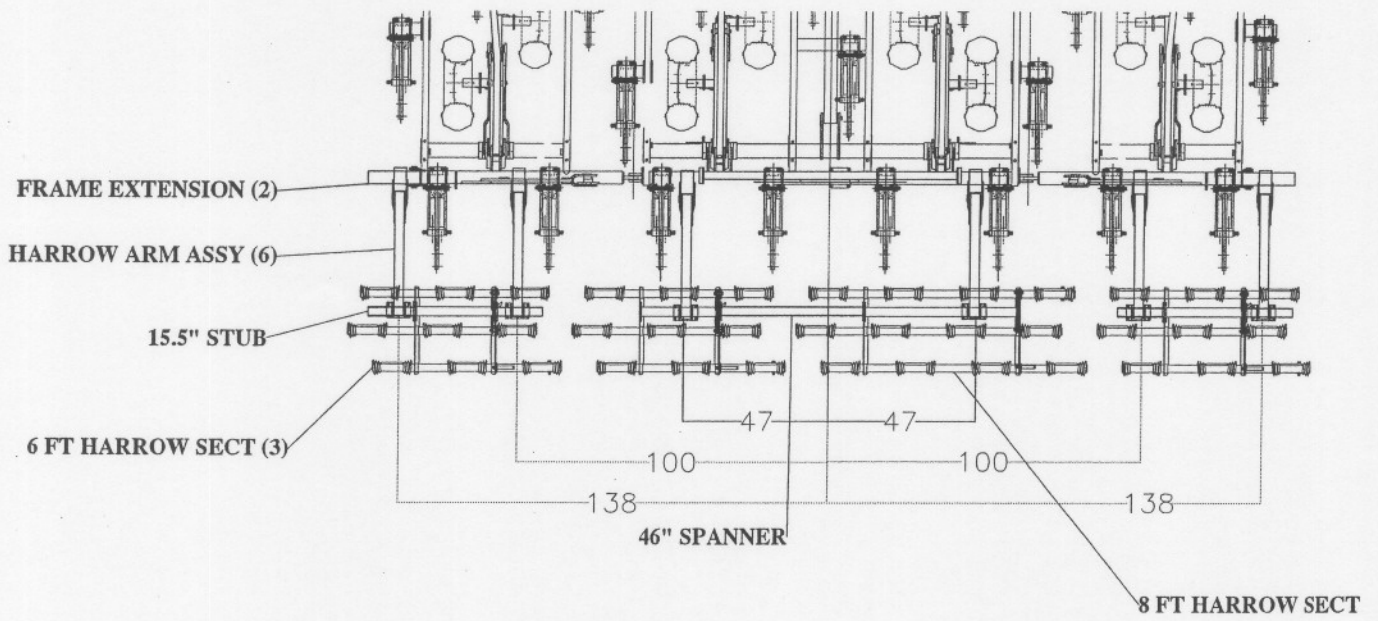


CHISEL PLOW HARROW MOUNTING CHART

ARM LOCATION (IN FROM CENTER)
SECTION, STUBS, SPANNERS & EXT

CHISEL MODEL	OUTER WINGS WINGS	MAIN FRAME	WINGS	OUTER WINGS
		x x x		
		x x x		
		29 29		
CPR 10		6ft 46"SP 6ft		
		47 47		
CPR 10-12		6ft 46"SP 8ft		
		47 47		
CPR 10-14		8ft 46"SP 8ft		
	96	29 29	96	
CPR 18	4ft	6ft 46"SP 6ft	4ft	
	109	47 47	109	
CPW 18-20	4ft	6ft 46"SP 8ft	4ft	
	138 100	29 29	100 138	
CPW 22	EXT 22.5"STUB 6ft	6ft 46"SP 6ft	6ft 22.5"STUB	EXT
	138 100	47 47	100 138	
CPW 22-24	EXT 15.5"STUB 6ft 15.5"STUB	6ft 46"SP 8ft	15.5" STUB 6ft 15.5"STUB	EXT
	138 100	29 29	100 139	
CPW 22-26	EXT 8ft	6ft 46"SP 6ft	8ft	EXT
	123 89	37 8 45	89 123	
CPW 25	22.5 STUB 6ft	6ft 46"SP 8ft	6ft 22.5 STUB	
	156 124	65 8 57	124 156	
CPW 25-27	EXT 15.5 STUB 6ft	8ft 46"SP 8ft	6ft 15.5 STUB	EXT
	162 119	37 8 45	119 162	
CPW 25-29	EXT 15.5 STUB 8ft	6ft 46"SP 8ft	8ft 15.5 STUB	EXT
	163 127	65 8 57	127 163	
CPW 31	8ft	8ft 46"SP 8ft	8ft	
	165 89	55 8 47	89 165	
CPW 31-33	4ft 39"SP 6ft 15.5"STUB	6ft 46"SP 8ft	15.5"STUB 6ft 39"SP 4ft	
	192 129	65 8 57	129 192	
CPW 31-35	EXT 6ft 39"SP 4ft	8ft 46"SP 8ft	4ft 39"SP 6ft	EXT
	192 129	65 8 57	129 192	
CPW 31-35	EXT 6ft 39"SP 4ft	8ft 46"SP 8ft	4ft 39"SP 6ft	EXT
	203 115	55 8 47	115 165	203
CPW 31-37	4ft 15.5"STUB 8ft	6ft 46"SP 8ft	8ft 15.5"STUB	4ft
	211 164	65 8 57	128 164	211
CPW 31-39	4ft 8ft	8ft 46"SP 8ft	8ft	4ft
	195 150 115	55 8 47	115 150 195	
CPW 37	6ft 46"SP 6ft	6ft 46"SP 8ft	6ft 46"SP 6ft	
	207 157 128	65 8 57	128 157 207	
CPW 37-39	6ft 46"SP 6ft	8ft 46"SP 8ft	6ft 46"SP 6ft	
	207 150 115	55 8 47	115 150 207	
CPW 37-41	8ft 46"SP 6ft	6ft 46"SP 8ft	6ft 46"SP 8ft	
	241 186 150 115	65 8 57	115 150 186	241
CPW 37-43	4ft 4ft 39"SP 6ft	8ft 46"SP 8ft	6ft 39"SP 4ft	4ft
	246 195 157 115	55 8 47	115 157 195	246
CPW 37-45	4ft 6ft 46"SP 6ft	6ft 46"SP 8ft	6ft 46"SP 8ft	4ft

EXAMPLE FOR HARROW ASSEMBLY



EXAMPLE CPW 22-24

